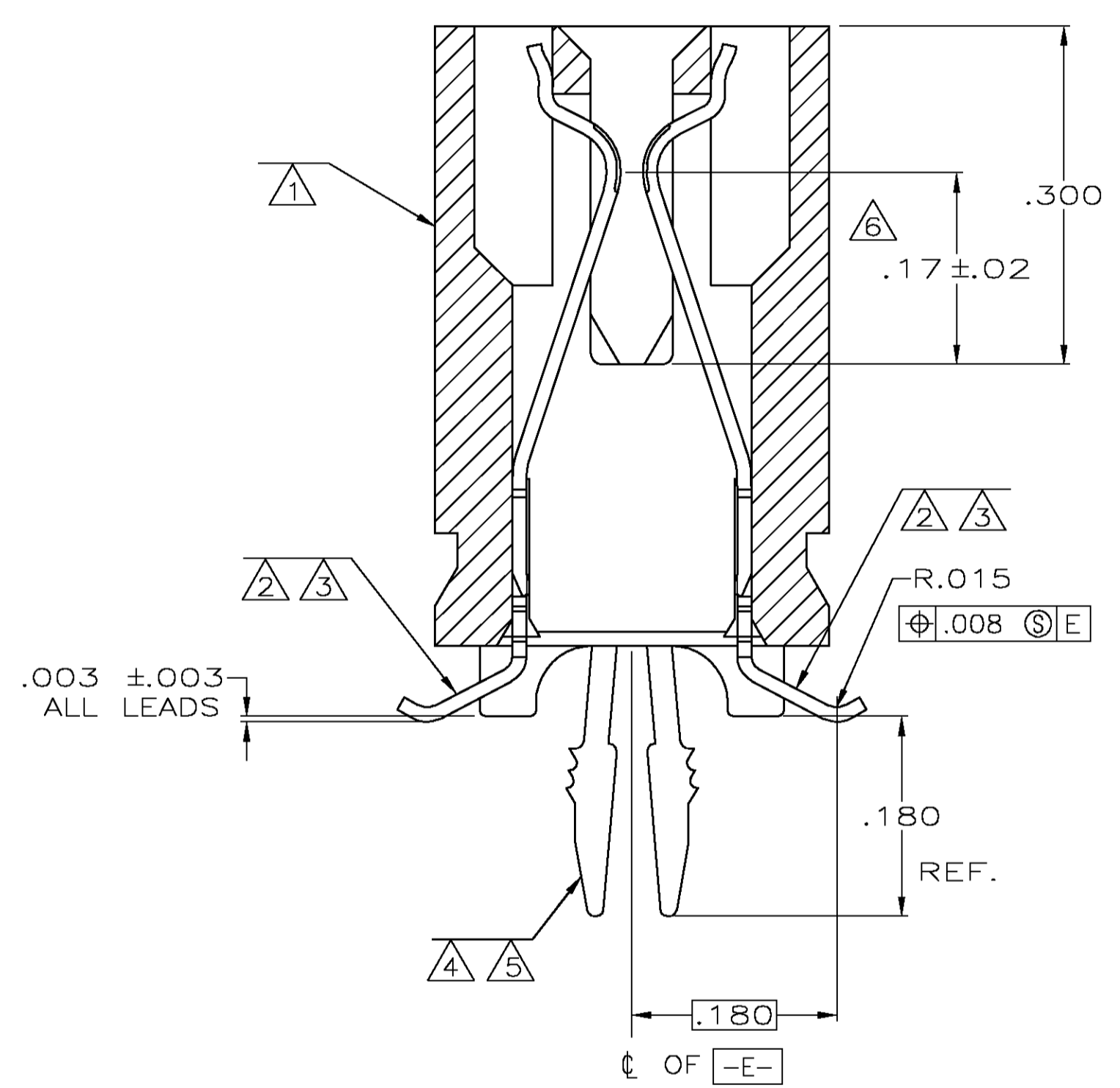
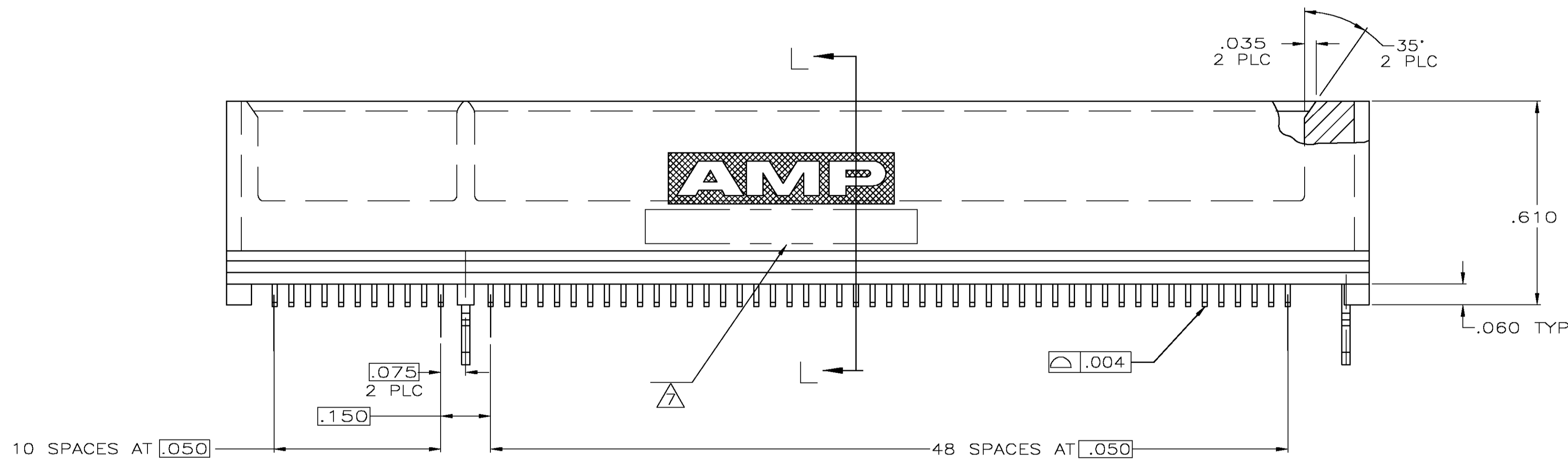
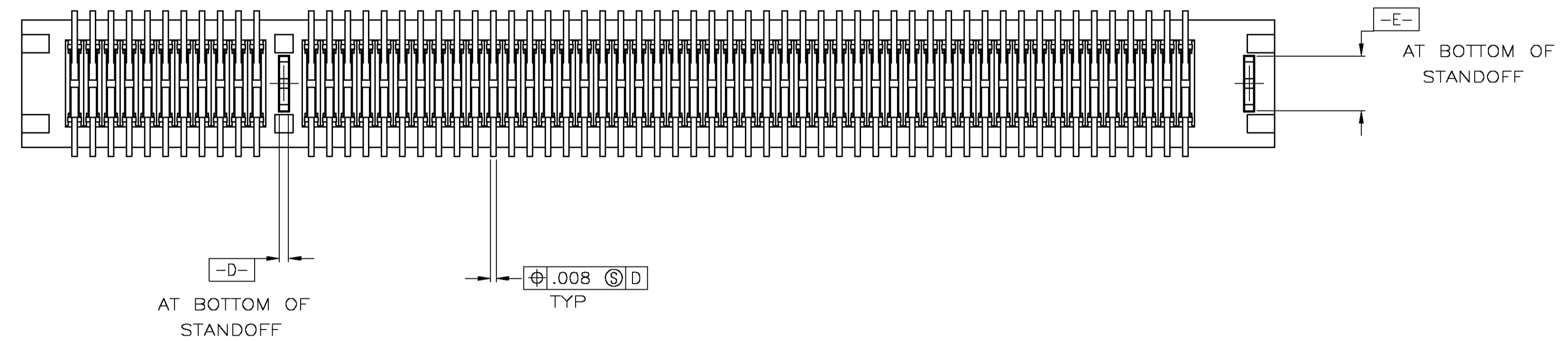


- ① HOUSING: HIGH TEMPERATURE THERMOPLASTIC.
- ② CONTACT: PHOSPHOR BRONZE.
- ③ CONTACT FINISH: .000100 MIN NICKEL ALL OVER, .000030 MIN GOLD OVER NICKEL IN CONTACT AREA, .000100 MIN MATTE TIN OVER NICKEL ON SOLDER TAILS.
- ④ METAL HOLD DOWN: BRASS
- ⑤ METAL HOLD DOWN FINISH: .000050 MIN NICKEL ALL OVER, .000150 MIN MATTE TIN ALL OVER.
- ⑥ DISTANCE FROM CONTACT POINT TO BOTTOM OF CARD SLOT.
- ⑦ AMP PART NUMBER, DATE CODE AND CSA LOGO MARKED IN APPROXIMATE AREA SHOWN.

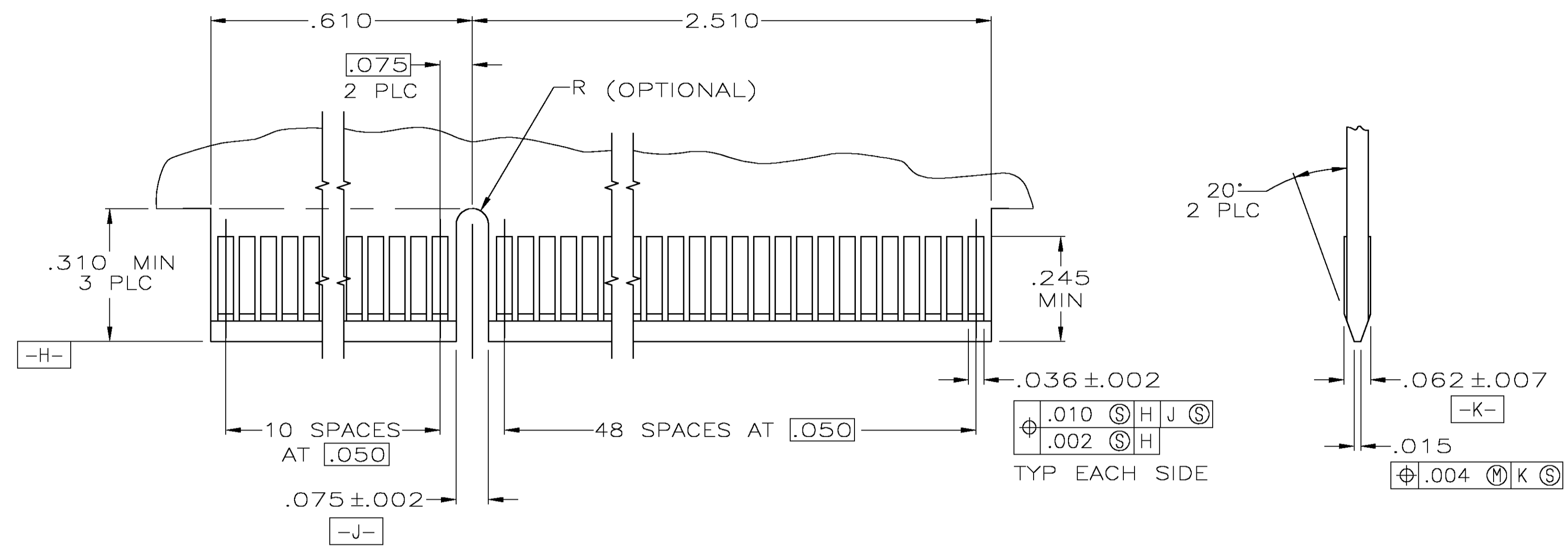


SECTION L-L
SCALE 8:1

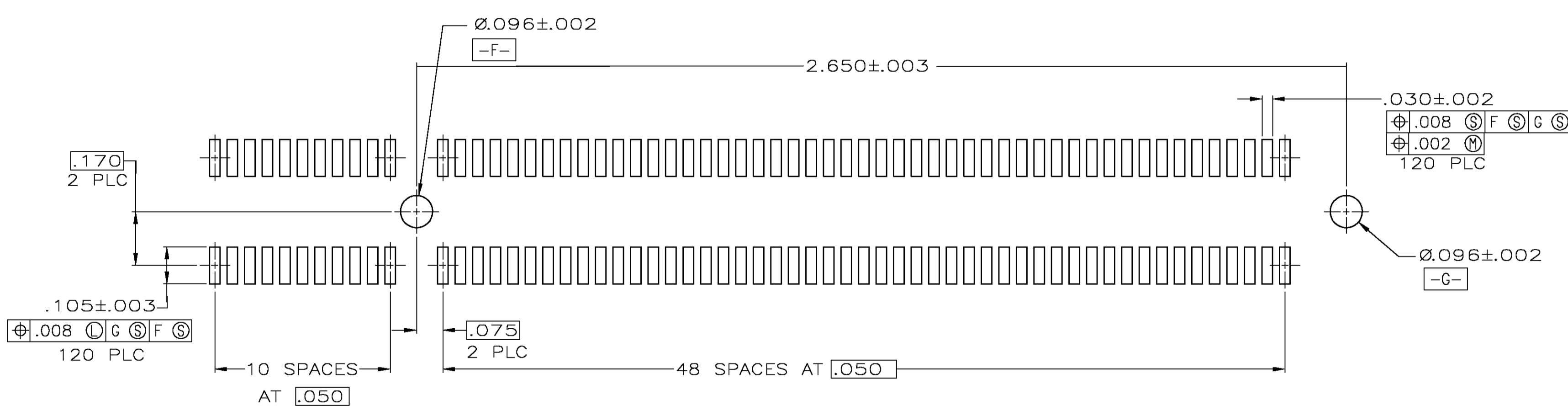


145098-1 AS SHOWN

THIS DRAWING IS A CONTROLLED DOCUMENT.		DWG AL FRANTUM 09 JUN 05 CHK AL FRANTUM 09 JUN 05 APVD AL FRANTUM	Tyco Electronics Corporation Harrisburg, Pa 17105-3608
DIMENSIONS: INCHES 0 PLC ± - 1 PLC ± - 2 PLC ± - 3 PLC ± .005 4 PLC ± - Z ANGLES ± - Z	TOLERANCES UNLESS OTHERWISE SPECIFIED: 0 PLC ± - 1 PLC ± - 2 PLC ± - 3 PLC ± .005 4 PLC ± - Z ANGLES ± - Z	PRODUCT SPEC 108-14034 APPLICATION SPEC 114-13148 WEIGHT -	NAME CONNECTOR ASSEMBLY, 60 DUAL POSITION, .050 SERIES, STANDARD EDGE, SURFACE MOUNT SIZE A1 CAGE CODE 00779 DRAWING NO. 5145098 RESTRICTED TO -
MATERIAL ①②④		FINISH ③⑤	CUSTOMER DRAWING SCALE 4:1 SHEET 1 OF 2 REV 0



RECOMMENDED MATING BOARD EDGE CONFIGURATION



RECOMMENDED PC BOARD PATTERN
(CONNECTOR SIDE SHOWN)

THIS DRAWING IS A CONTROLLED DOCUMENT.		DNV AL FRANTUM 09 JUN 05	 Tyco Electronics Corporation Harrisburg, Pa 17105-3608
		CHK AL FRANTUM 09 JUN 05	
DIMENSIONS: INCHES	TOLERANCES UNLESS OTHERWISE SPECIFIED:	APVD	NAME
	0 PLC ± -	PRODUCT SPEC	CONNECTOR ASSEMBLY, 60 DUAL POSITION, .050 SERIES, STANDARD EDGE, SURFACE MOUNT
	1 PLC ± -	108-14034	
	2 PLC ± -	APPLICATION SPEC	
	3 PLC ± .005	114-13148	
	4 PLC ± -	SIZE	A1
	ANGLES ± - Z	WEIGHT	00779
MATERIAL SEE SHEET 1	FINISH SEE SHEET 1	CUSTOMER DRAWING	SCALE 4:1 SHEET 2 OF 2 REV 0